

Metricon

Display Home for Sale

Fairhaven 33

Ascent

Lot 220.1 Torquay Road
Grovedale
Mel Ref: 465 J5
Block size: 593m²

\$635,000

- Guaranteed rental return of 7.5% for the life of the display*
- All outgoing costs covered for the life of leaseback
- Beautifully finished home with luxury upgrades and landscaped gardens
- Outstanding investment opportunity



Ascent Facade



For more information contact

Grovedale Display Centre
Ph: (03) 5245 7130 or 1300 METRICON

georgiapohlman@metricon.com.au or
brianspokes@metricon.com.au



metricon

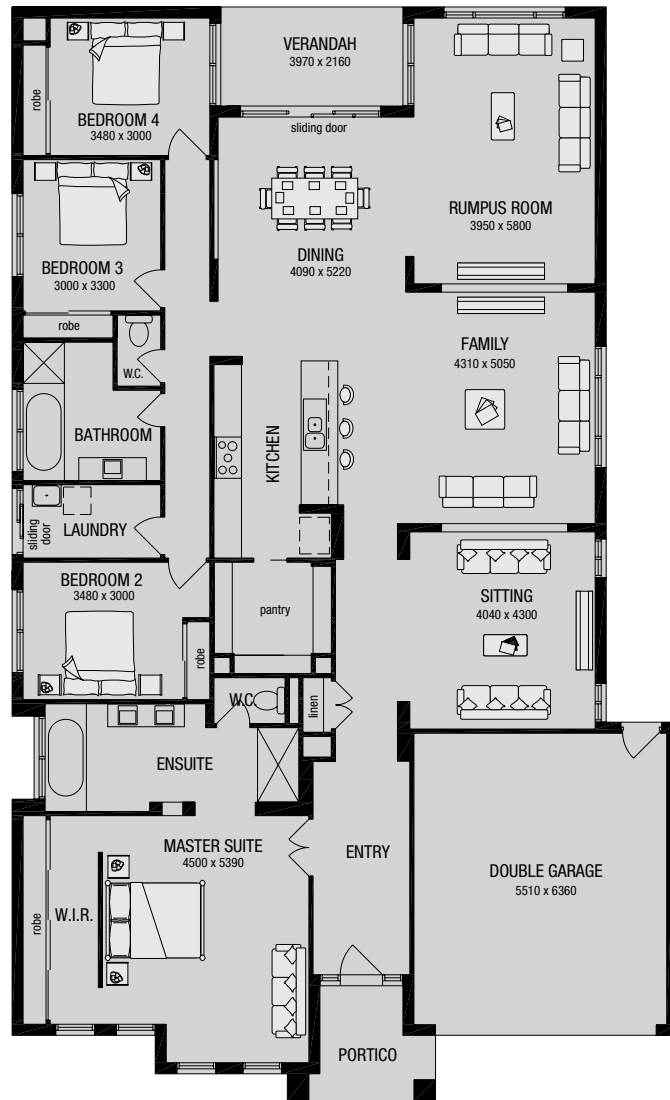
metricon.com.au

7.5% leaseback for the life of the display*

Features:

- Alfresco living
- Opulent kitchen with butler's pantry
- Hotel style free standing bath tub in master suite
- Fully landscaped garden with automated sprinkler system
- Extra large double lock up garage
- All fixed floor coverings
- Evaporative Cooling
- Heating
- Security alarm system
- Downlights
- Window furnishings
- Upgraded door furniture
- Water tank
- Extended outdoor room in lieu of rumpus room
- Stainless steel appliances
- CaesarStone benchtops

As displayed floorplan available, ask your New Home Sales Consultant



For more information contact

**Grovedale Display Centre
Ph: (03) 5245 7130 or 1300 METRICON**

**georgiapohlman@metricon.com.au or
brianspokes@metricon.com.au**



metricon.com.au